



Feature -


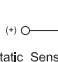
- 5 direction navigation cap
- panel mount and PCB module installation
- LED illumination

Application -

- consumer products
- computer products
- instrumentation
- communication equipments
- home appliances

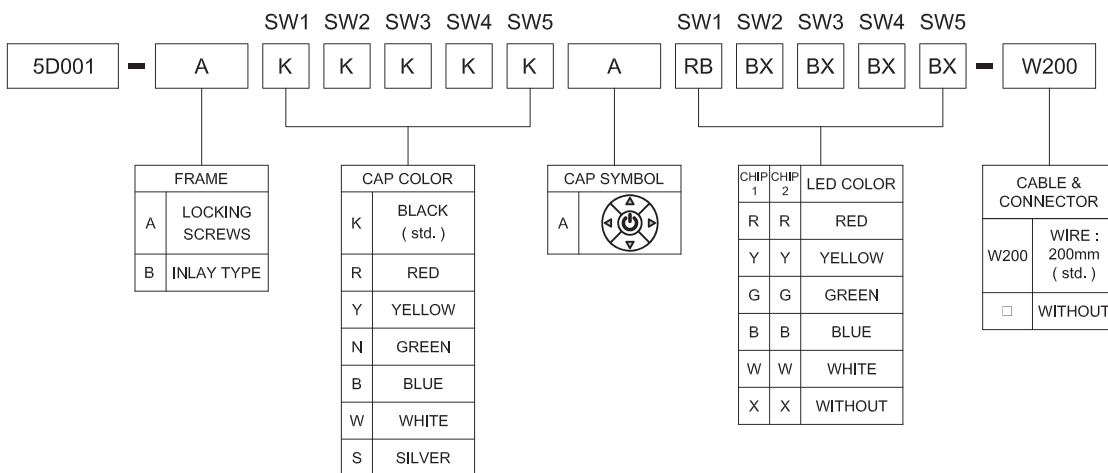
► SPECIFICATIONS

SWITCH SPECIFICATIONS	
POLE - POSITION	Momentary action , SPST
CONTACT RATING	12 V DC , 50 mA
CONTACT RESISTANCE	100 mΩ MAX. 5 V DC ; 1 A , by Method of Voltage DROP
INSULATION RESISTANCE	1000 MΩ MIN. 100 V DC for 1 minute
DIELECTRIC STRENGTH	Breakdown is not Allowable ; 250 V AC for 1 Minute
OPERATING FORCE	200 ± 80 gf ; 450 ± 150 gf
OPERATING LIFE	500,000 cycles
OPERATING TEMPERATURE RANGE	-20°C ~ 70°C
TOTAL TRAVEL	0.45 ± 0.15 mm

LED SPECIFICATIONS		Unit	Value / LED Color			
			Blue	Green	Red	Yellow
 ATTENTION	 LEDs are Electrostatic Sensitive devices					
		FORWARD CURRENT	If	mA	20	20
REVERSE VOLTAGE	Vr	V	5.0	5.0	5.0	5.0
REVERSE CURRENT	Ir	µA	10	10	10	10
FORWARD VOLTAGE@20mA	Vf	V	3.5-3.8	2.0-2.5	2.0-2.5	2.0-2.5
LUMINOUS INTENSITY@20mA	Iv	mcd	45	20	80	80

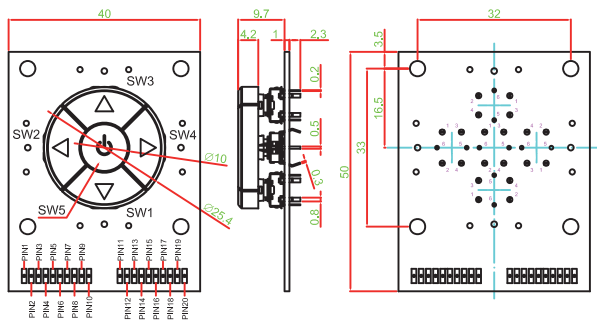
Physical and electrical information of LED will be provided upon customer's request on switches .

► HOW TO ORDER

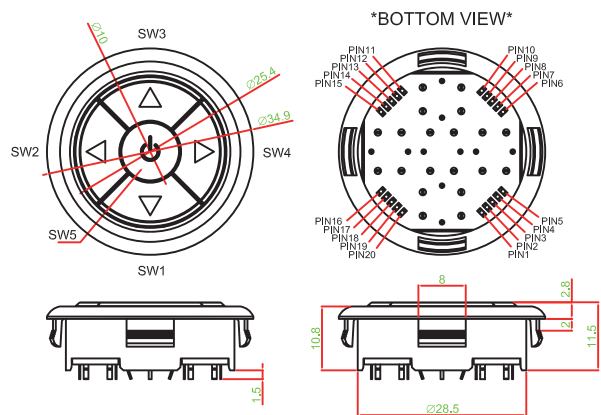


▶ FRAME TYPE OPTION

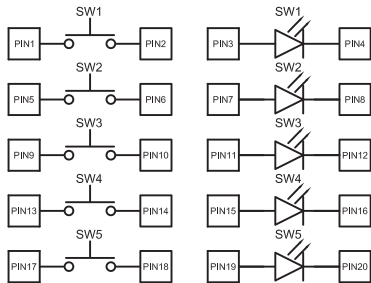
5D001-AKKKKKARXRXRXRXR



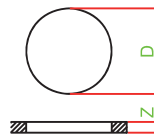
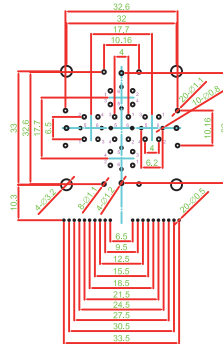
5D001-BKKKKKARXRXRXRXR



▶ CIRCUIT



▶ P.C.B LAYOUT & PANEL CUT OUT



Z	D
1.0 ~ 2.0	33.1~33.3
2.0 ~ 2.5	33.3~33.7
2.5 ~ 3.0	33.7~34.0

▶ MATERIAL

- ACTUATOR - LCP
- TERMINAL - BRASS SILVER PLATING
- BASE - LCP
- SPRING PLATE - PHOSPHOR BRONZE SILVER PLATING
- HOUSING - PA
- PCB - FR4